

# Curriculum Newsletter

Year 4 - Summer 2022



Glynnne Primary School

**Our learning journey this term is 'Rainforest Adventure'**

## As geographers we will

- locate world countries, with a focus on South America, and where rainforests are found across the world.
- Identify the position of latitude, longitude, Equator, Northern Hemisphere, Southern Hemisphere, the Tropics of Cancer and Capricorn
- Understand geographical similarities and differences through the study the UK and a region of South America (Amazon)
- Look at different types of settlement and land use.
- Complete an in depth study of the Amazon Rainforest.

## As scientists we will:

- Identify and describe the functions of different parts of flowering plants:
- Explore the part that flowers play in the life cycle of flowering plants, including pollination, seed formation and seed dispersal.
- Explore the layers of the rainforest – types of plants/trees found at each layer
- Construct and interpret a variety of food chains, identifying producers, predators and prey.
- Recognise that environments can change and affect living things.
- Understand the effects of global warming and deforestation on the rainforest habitat.

## English

### Grammar

- Fronted adverbials
- Use of paragraphs
- Use of apostrophes for possession and contractions
- Extend a range of sentences with more than one clause.
- Speech punctuation

### Writing

- To compose a non-fiction pieces for different purposes.
- Use appropriate grammar, vocabulary and paragraphing in descriptive writing.
- Compose and perform poetry
- Compose a narrative with a focus upon paragraphs and developing a strong ending.
- Evaluate and edit our writing – proposing changes.

**Read your reading book every day ensuring you still read regularly to an adult.**

## Maths

- Round any number to the nearest 10, 100 or 1000
- Add, subtract, multiply and divide numbers using mental methods, jottings and a formal written method.
- Use inverse operations to check answers to a calculation.
- Convert between different units of measure.
- Interpret and analyse data using graphs.
- Recognise equivalent fractions.
- Identify acute and obtuse angles and compare and order angles.
- Complete real life problems using the four operations.
- Know times tables facts up to 12 X 12.

**Practise times tables daily at home and access TT Rock stars. Complete a sound check weekly.**

**Statutory times tables test will be completed during the second half of June 2022**

**Children will focus on the statutory Year 3/4 spellings from the national curriculum and apply them to their written work where appropriate.**

## Physical Education

- Athletics (Monday – outdoor kit)
- Dance (Friday - indoor kit)

## MFL

- To talk about likes and dislikes in Spanish
- To say hair and eye colour as phrases

## Homework and take home tasks

Your child will be set spelling and maths homework on Wednesday, this should be returned by Monday morning. In addition, the children will be set times table activities through Time Tables Rock stars.

### Accelerated Reader

Your child will choose a book within their ZPD from school. Once your child completes a book, they will complete a quiz either at home or in school. Remember you can log into **Home Connect** to see your child's AR bookcase and quizzes. It is important that your child still reads their AR book to an adult regular throughout the week

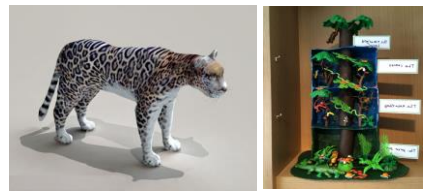
**Please share stories and read to your child as often as you can – Read a bedtime story**

We are asking children to complete one take home task this term from the selection below. Once finished, this can be brought into school.

Create a rainforest food chain and present it as creatively as you can.



Make a 3D rainforest animal or rainforest habitat.



Create your own rainforest map, be as creative as you can.



Create a fact file about a rainforest plant or animal.



Reproduce Henri Rousseau's painting entitled, "Tiger in a Tropical Storm."



Cook a recipe with rainforest ingredients, take a photo and bring it into school!



### Rights Respecting Schools

#### Article 24

You have the right to clean, safe water to drink, nutritious food and a clean and safe environment to live.

#### Article 36

You have the right to protection from any kind of exploitation (being taken advantage of).

### PSHE/RSE

Year 4 will be focusing on physical health and mental wellbeing, growing and changing and oral hygiene.